




NORTHAMPTONSHIRE COUNTY COUNCIL
CHILDREN FAMILIES AND EDUCATION

POLICY AND PROCEDURES ON SAFEGUARDING / CHILD
PROTECTION FOR SCHOOLS

(November 2016)

Name of school:-	
Brigstock Latham's Primary School	

This policy is compliant with Keeping Children Safe in Education (September 2016)
It is reviewed annually by the governing body and was last reviewed on:- Wednesday 7 th December 2016

Signature (Chair Governors)

Print Name Mrs Abigail Marsden-Findlay Date:.....

Signature (Headteacher)

Print Name Mr Wayne Jones Date:.....

Signature (Designated Safeguarding Lead)

Print Name Miss Jennie Kirby Date:.....

CONTENTS

Page

Named staff & initial contacts	3
Introduction	4
Safeguarding Commitment	5
Roles and Responsibilities	
General	6
Governing Body	6
Headteacher	7
Designated Safeguarding Lead	8
Records, Monitoring and Transfer	9
Support to pupils and School Staff	10
Other Relevant Policies	11
Recruitment and Selection of Staff	11
Useful links – Local and National	12 & 13
Appendix 1 – Definitions of abuse	14 & 15
Appendix 2 - Procedure to follow in cases of possible, alleged or suspected abuse	16
Appendix 3 - Procedure for allegations against staff and volunteers	18

Named staff and initial contacts

Designated Safeguarding Lead: Jennie Kirby, Senior Teacher, Year 5/6

Deputy Designated Safeguarding Leads : Wayne Jones (Head Teacher), Sandy Ettridge (Senior Teacher)

Nominated Safeguarding Governor: Paula Addison-Pettit

Safeguarding, advice and training contacts:

Safeguarding Referrals must be made in one of the following ways:

- By telephone contact to the Multi-Agency Safeguarding Hub: **0300 126 1000**;
- By e-mail to: MASH@northamptonshire.gcsx.gov.uk;
- By using the online referral form found at <http://www.northamptonshirescb.org.uk/more/borough-and-district-councils/how-to-make-an-online-referral/>
- In an emergency outside office hours, by contacting the Emergency Duty Team or the Police.
- **If a child is in immediate danger at any time, left alone or missing, you should contact the police directly and/or an ambulance using 999.**

Multi-Agency Safeguarding Hub (M.A.S.H)

The Multi-Agency Safeguarding Hub (MASH) deals with referrals from professionals and members of the public who may have concerns about a child's welfare following contact with the helpline that is now also based in the Multi-Agency Safeguarding Hub. It makes the process of dealing with referrals quicker and more effective by improving the way county council: Children's social care, Northamptonshire Fire and Rescue Service (NFRS), Youth Offending Service (YOS) and education, work alongside other partner agency colleagues including Northamptonshire police, Northamptonshire health partners, National Probation Service, and the East Midlands Ambulance Service (EMAS) to share information.

For referrals regarding adults in education:

Designated Officers (formerly LADO)

01604 367677

LADOREferral@northamptonshire.gcsx.gov.uk

1 Introduction

1.1 Brigstock Latham's Primary School fully recognises the contribution it can make to protect children and support pupils in school. The pupils' welfare and safety is of paramount importance. The aim of the policy is to safeguard and promote our pupils' welfare, safety and health by fostering an honest, open, caring and supportive climate. Brigstock Latham's Primary School are clear that safeguarding is what we do for all children and Child Protection is what we do for children who have been harmed or at risk of being harmed

- the legal duty on schools to safeguard and promote the welfare of children, as described in section 175 of the Education Act 2002 [or section 157 of the Education Act 2002 for independent schools and academies]
- the statutory guidance "*Keeping Children Safe in Education – Statutory Guidance for Schools and Colleges*" –2016
- The government's '*Working Together 2015*' which sets out statutory guidance for agencies
- the Northamptonshire Safeguarding Children Board (NSCB) Procedures, which contain procedures and guidance for safeguarding children.
- The Thresholds and Pathways document which sets out expectations for level of need and information regarding information sharing

1.3 There are four main elements to our Child Protection Policy:

- **Prevention** (e.g. positive, supportive school atmosphere, teaching and pastoral support to pupils, safer recruitment procedures);
- **Protection** (by following agreed procedures, ensuring all staff are trained and supported to respond appropriately and sensitively to Child Protection concerns);
- **Support** (to pupils and school staff and to children who may have been abused);
- **Working with parents** (to ensure appropriate communications and actions are undertaken).

1.4 This policy applies to all staff, governors and visitors to the school. We recognise that child protection is the responsibility of **all** staff. We recognise that safeguarding is everyone's responsibility and that all that we do is always in the best interests of the child. We ensure that all parents and other working partners are aware of our child protection policy by highlighting it in our school prospectus and on our school website, displaying appropriate information in our reception and by raising awareness at meetings with parents. We know that incidents that impact on safety and welfare could happen to children who attend Brigstock Latham's Primary School.

1.5 Extended School Activities

Where the Governing Body provides services or activities directly under the supervision or management of school staff, the school's arrangements for child protection will apply. Where services or activities are provided separately by another body, the Governing Body will seek assurance in writing that the body concerned has appropriate

policies and procedures in place to safeguard and protect children and that there are arrangements to liaise with the school on these matters where appropriate.

2 Safeguarding Commitment

2.1 The school adapts an open and accepting attitude towards children as part of its responsibility for pastoral care. All staff encourage children and parents to feel free to talk about any concerns and to see school as a safe place when there are difficulties. Children's fears and concerns will be taken seriously and children are encouraged to seek help from members of staff.

2.2 Our school will therefore:

- Establish and maintain an ethos where children feel secure and are encouraged to talk, and are always listened to;
- Ensure that children know that there are adults in the school whom they can approach if they are worried or are in difficulty;
- Include in the curriculum activities and opportunities for PSHE/Citizenship which equip children with the skills they need to stay safe from abuse (including online), and to know to whom they can turn for help;
- Provide opportunities to establish effective working relationships with parents and colleagues from other agencies;
- Operate safer recruitment procedures and make sure that all appropriate checks are carried out on new staff and volunteers who will work with children, including references, Criminal Record and prohibition from teaching checks;
- Provide opportunities for children to be involved by having Safeguarding and Anti-Bullying as an agenda item at School Council meetings.

The referral process

2.3 Safeguarding in the Curriculum

The following areas are among those addressed in PSHE and in the wider curriculum:

Bullying/Cyberbullying

Domestic violence / Relationships

Drug, alcohol and substance abuse

E Safety / Internet Safety

Extremism/Radicalisation including PREVENT

Fire and Water Safety

Protective Behaviours

Road Safety

Sexting

Stranger Awareness

Other safeguarding issues as relevant. Eg gang activity

3 Roles and Responsibilities

3.1 General

All adults working with or on behalf of children have a responsibility to safeguard and promote their welfare. This includes a responsibility to be alert to possible abuse and to record and report concerns without delay to staff identified with child protection responsibilities within the school.

The names of the Designated Safeguarding Leads for the current year are listed at the start of this document.

3.2 Governing Body

In accordance with the Statutory Guidance *“Keeping Children Safe in Education” –2016*, the Governing Body will ensure that:

- The school has a child protection/safeguarding policy, procedures and training in place which are effective and comply with the law at all times. The policy is made available publicly;
- The school operates safer recruitment practices, including appropriate use of references and checks on new staff and volunteers. Furthermore, the Headteacher, a nominated Governor and other staff involved in the recruitment process have undertaken appropriate Safer Recruitment training;
- There are clear procedures for dealing with allegations of abuse against members of staff and volunteers;
- There is a senior member of the school’s leadership team who is designated to take lead responsibility for dealing with child protection (the “Designated Safeguarding Lead”) and that there is always cover for this role;
- The Designated Safeguarding Lead undertakes local training (in addition to basic child protection training) and this is refreshed every two years;
- The Headteacher, and all other staff and volunteers who work with children, undertake appropriate training which is regularly updated (in compliance with the NSCB Learning and Development Strategy) and that new staff and volunteers who work with children are made aware of the school’s arrangements for child protection and their responsibilities. The Local Authority pocket guide, “Making Children Safer”, the “Keeping Children Safe in Education - 2016 – Information for all School and College Staff” and the “Staff Code of Conduct” will be used as part of this induction;
- Any deficiencies or weaknesses brought to the attention of the Governing Body will be rectified without delay;

- The Chair of Governors (or, in the absence of a Chair, the Vice Chair) deals with any allegations of abuse made against the Headteacher, in liaison with the Designated Officer formerly (LADO);
- Effective policies and procedures are in place and updated annually including a behaviour policy/“code of conduct” for staff and volunteers. The staff code of conduct at Brigstock Latham’s Primary School directly references the national guidance on safer working practises and it is expected that all staff will adhere to this at all times. Information is provided to the Local Authority (on behalf of the NSCB) through the Annual Section 11 Safeguarding Return; For schools this responsibility is covered in the Education Act 2002.
- There is an individual member of the Governing Body who will champion issues to do with safeguarding children and child protection within the school, liaise with the Designated Safeguarding Lead, and provide information and reports to the Governing Body;
- The school contributes to inter-agency working in line with statutory guidance *“Working Together to Safeguard Children” 2015* and *Northamptonshire County Council’s “Thresholds and Pathways Document”* including providing a co-ordinated offer of early help for children who require this through the Early Help Assessment process. Safeguarding arrangements take into account the procedures and practice of the local authority and the Northamptonshire Safeguarding Children Board (NSCB).

3.3 Headteacher

The Headteacher of the school will ensure that:

- The policies and procedures adopted by the Governing Body are effectively implemented, and followed by all staff;
- Sufficient resources and time are allocated to enable the Safeguarding Lead and other staff to discharge their responsibilities, including taking part in strategy discussions and other inter-agency meetings, and contributing to the assessment of children;
- Allegations of abuse or concerns that a member of staff or adult working at school may pose a risk of harm to a child or young person are notified to the Designated Officer (formerly LADO);
- All staff and volunteers feel able to raise concerns about poor or unsafe practice in regard to children, and such concerns are addressed sensitively, confidentially and effectively in a timely manner;
- All staff are made aware that they have an individual responsibility to pass on safeguarding concerns and that if all else fails to report these directly to Children’s Social Care Services or the Police.

3.4 Designated Safeguarding Lead

The responsibilities of the Designated Safeguarding Lead are found in *Annex B* of “*Keeping Children Safe in Education*” 2016 and include:

The designated safeguarding lead is expected to:

- refer cases of suspected abuse to the local authority children’s social care as required;
- support staff who make referrals to local authority children’s social care;
- refer cases to the Channel programme where there is a radicalisation concern as required;
- support staff who make referrals to the Channel programme;
- refer cases where a person is dismissed or left due to risk/harm to a child to the Disclosure and Barring Service as required; and
- refer cases where a crime may have been committed to the Police as required.

The designated safeguarding lead is expected to:

- liaise with the headteacher or principal to inform him or her of issues especially ongoing enquiries under section 47 of the Children Act 1989 and police investigations;
- as required, liaise with the “case manager” (as per Part four) and the designated officer(s) at the local authority for child protection concerns (all cases which concern a staff member); and
- liaise with staff on matters of safety and safeguarding and when deciding whether to make a referral by liaising with relevant agencies.
- Act as a source of support, advice and expertise for staff. Training
- The designated safeguarding lead (and any deputies) should undergo training to provide them with the knowledge and skills required to carry out the role.
- This training should be updated at least every two years. The designated safeguarding lead should undertake Prevent awareness training.

In addition to the formal training set out above, their knowledge and skills should be refreshed (this might be via e-bulletins, meeting other designated safeguarding leads, or simply taking time to read and digest safeguarding developments) at regular intervals, as required, but at least annually, to allow them to understand and keep up with any developments relevant to their role so they:

- understand the assessment process for providing early help and intervention, for example through locally agreed common and shared assessment processes such as early help assessments;
- have a working knowledge of how local authorities conduct a child protection case conference and a child protection review conference and be able to attend and contribute to these effectively when required to do so;
- ensure each member of staff has access to and understands the school or college’s child protection policy and procedures, especially new and part time staff;

- are alert to the specific needs of children in need, those with special educational needs and young carers;
- are able to keep detailed, accurate, secure written records of concerns and referrals;
- understand and support the school or college with regards to the requirements of the Prevent duty and are able to provide advice and support to staff on protecting children from the risk of radicalisation;
- obtain access to resources and attend any relevant or refresher training courses;
- encourage a culture of listening to children and taking account of their wishes and feelings, among all staff, in any measures the school or college may put in place to protect them.

Raise Awareness

The designated safeguarding lead should:

- ensure the school or college's child protection policies are known, understood and used appropriately;
- ensure the school or college's child protection policy is reviewed annually (as a minimum) and the procedures and implementation are updated and reviewed regularly, and work with governing bodies or proprietors regarding this;
- ensure the child protection policy is available publicly and parents are aware of the fact that referrals about suspected abuse or neglect may be made and the role of the school or college in this; and
- link with the local LSCB to make sure staff are aware of training opportunities and the latest local policies on safeguarding.

Availability During term time

- the designated safeguarding lead (or a deputy) should always be available (during school or college hours) for staff in the school or college to discuss any safeguarding concerns. Whilst generally speaking the designated safeguarding lead (or deputy) would be expected to be available in person, it is a matter for individual schools and colleges, working with the designated safeguarding lead, to define what "available" means and whether in exceptional circumstances availability via phone and or Skype or other such media is acceptable.

It is a matter for individual schools and colleges and the designated safeguarding lead to arrange adequate and appropriate cover arrangements for any out of hours/out of term activities

4 Records, Monitoring and Transfer

- 4.1 Well-kept records are essential to good child protection practice. All staff are clear about the need to record and report concerns about a child or children within the school. The Designated Safeguarding Lead is responsible for such records and for deciding at what point these records should be shared with other agencies.
- 4.2 Records relating to actual or alleged abuse or neglect are stored separately and securely from normal pupil or staff records. Normal records have markers to show that there is

sensitive material stored elsewhere. This is to protect individuals from accidental access to sensitive material by those who do not need to know.

- 4.3 Child protection records are stored securely, with access confined to specific staff, e.g. the Designated Safeguarding Lead and the Headteacher.
- 4.4 Child protection records are reviewed regularly to check whether any action or updating is needed. This includes monitoring patterns of complaints or concerns about any individuals and ensuring these are acted upon.
- 4.5 When children transfer school copies of all their child protection records are also transferred. Safeguarding records will be transferred separately from other records and best practice is to pass these directly to a Designated Safeguarding Lead in the receiving school *or educational establishment* with any necessary discussion or explanation and to obtain a signed and dated record of the transfer. In the event of a child moving out of area and a physical handover not being possible then the most secure method possible should be found to send copies of the confidential records to a named Designated Safeguarding Lead by registered post with a receipt request. This is in line with Keeping Children Safe in Education 2015

5 Support for Pupils and School staff

- 5.1 Support for pupils
Our school recognises that children who are abused or who witness violence may find it difficult to develop a sense of self-worth and view the world in a positive way. For such children school may be one of the few stable, secure and predictable aspects of their lives. Other children may be vulnerable because, for instance, they have a disability, are in care, or are experiencing some form of neglect. We will actively seek to provide such children with the necessary support and to build their self-esteem and confidence.
- 5.2 This school recognises that children sometimes display abusive behaviour and that such incidents must be referred on for appropriate support and intervention.
- 5.3 Complaints or concerns raised by pupils will be taken seriously and followed up in accordance with the school's complaints process.
- 5.4 Support for Staff
As part of their duty to safeguard and promote the welfare of children and young people staff may hear information, either from the child/young person as part of a disclosure or from another adult that will be upsetting. Where a member of staff is distressed as a result of dealing with a child protection concern, he/she should in the first instance speak to the Designated Safeguarding Lead about the support he/she requires. The Designated Safeguarding Lead should seek to arrange the necessary support.

6 Working with Parents/Carers

The school will:

- Ensure that parents/carers have an understanding of the responsibility placed on the school and staff for child protection by setting out its obligations in the school prospectus and on the school website;
- Undertake appropriate discussion with parents/carers prior to involvement of CYPS Specialist Services (Children’s Social Care) or another agency, unless to do so would place the child at risk of harm or compromise an investigation.

7 Other Relevant Policies

7.1 The Governing Body’s statutory responsibility for safeguarding the welfare of children goes beyond simply child protection. The duty is to ensure that safeguarding permeates all activity and functions. This policy therefore complements and supports a range of other policies, for instance:

- Behaviour Management
- Attendance
- Racist Incidents
- Anti-Bullying (including Cyberbullying)
- Positive Handling Policy (DfE Guidance - “Use of Reasonable Force” and “Screening, Searching and Confiscation”)
- Special Educational Needs and Disabilities
- Trips and Visits
- Work Experience and Extended Work Placements
- First Aid and the Administration of Medicines
- Health and Safety
- Sex and Relationships Education
- Site Security
- Equal Opportunities
- Toileting/Intimate care
- E-safety

The above list is not exhaustive but when undertaking development or planning of any kind the school needs to consider the implications for safeguarding and promoting the welfare of children.

8 Recruitment and Selection of Staff

8.1 The school’s safer recruitment processes are based on the Statutory Guidance: *“Keeping Children Safe in Education”* - 2016.

8.2 The school has an open safeguarding ethos regularly addressing safeguarding responsibilities during staff meetings and fostering an ongoing culture of vigilance. All new staff and volunteers receive a safeguarding induction and are briefed on the code of conduct for adults working with children this will include staff relationships with pupils and abuse of trust. The Northamptonshire County Council Local Authority pocket guide, *“Making Children Safer”*, the *“Keeping Children Safe in Education 2015 –*

Information for all school and college staff” and the “Staff Code of Conduct” are given to all staff and are the basis for the safeguarding induction.

- 8.3 On every interview panel for school staff at least one member (teacher/manager or governor) will have undertaken safer recruitment training either online on the DfE /NSPCC website or by attending other appropriate local or national accredited training course.
- 8.4 Brigstock Latham’s Primary School will adhere to the school’s most current Safer Recruitment Policy to ensure best practice throughout all stages of the recruitment process.
- 8.5 Brigstock Latham’s Primary School will ensure that employees must show DBS before or on appointment or as soon as practicable after. All governors will be DBS checked prior to appointment or as soon as practicable afterwards.

9 Information Sharing

- 9.1 Our school recognises the importance of Information sharing and follows statutory guidance as set out in ‘Information Sharing’ – Advice for practitioners providing safeguarding services to children, young people, parents and carers – March 2015. Staff will also refer to the Thresholds and Pathways Document. Information will always be shared where it is deemed that there is risk of significant harm to an individual.

10 Staff Relationships with Pupils

As already described all staff will be made aware of their position of trust and we will adhere to regulations relating to the Sexual Offences Act 2003. This trust extends to use of social media.

11 Communications on Social Media

We will comply with the Home Office and DfE guidance on use of social media and online activity by extremists to radicalise and recruit young people. We will take advice and use existing LSCB safeguarding and child protection procedures to refer to. If we have a concern we will make use of the national helpline 0207 3407264. Brigstock Latham’s Primary School is aware of the potential for peer on peer abuse and sexting through the use of social media and ensure that staff are appropriately trained to manage these incidents through the school’s anti-bullying policy.

12 Children Missing from Education

- 12.1 The school recognises the importance that all children are entitled to full time education which is suitable to their age, ability, aptitude and any special educational needs they may have.
- 12.2 The school recognises a child missing from education is a potential indicator of abuse or neglect.

12.3 The school will follow the details set out in the NSCB procedure 'Children Missing Education' to report and respond to incidences of children missing from school. We will also comply with the guidance in keeping Children Safe in Education 2015

12.4 We also ensure that additional risks are considered to those missing from education including those who may be potential victims of sexual exploitation, FGM, Forced Marriage or have potential safeguarding concerns due to travelling to conflict zones.

13 Child Sexual Exploitation

13.1 The school is committed to ensuring that all incidences of potential child sexual exploitation are reported and acted upon. The school follows the guidance and procedure set out in the NSCB CSE Toolkit. <http://www.northamptonshirescb.org.uk/schools/cse-professionals/tackling-cse-toolkit-schools/>

14 Honour Based Violence and Female Genital Mutilation

14.1 If staff have concerns they activate NSCB local procedures on responding and reporting FGM as found in the NSCB procedures manual.

14.2 When mandatory reporting commences in October 2015 these local procedures will remain when dealing with concerns regarding the potential for FGM to take place. Where a teacher discovers that an act of FGM appears to have been carried out on a girl who is aged under 18, there is a statutory duty upon that individual to report it to the police. This failing to report such cases will face disciplinary sanctions. Further information can be found in Section 5B of the Female Genital Mutilation Act 2003 (as inserted by section 74 of the Serious Crime Act 2015)

15 Preventing Radicalisation

15.1 Preventing Radicalisation is seen as part of the schools' wider safeguarding duties. The school supports the notion that it is possible to intervene and prevent vulnerable people becoming radicalised.

15.2 Staff should use their professional judgement in identifying children who might be at risk of radicalisation and act proportionately which may include making a referral to the Channel Panel.

15.3 The school accepts its duty under the *Prevent* Duty Guidance for England and Wales which places requirements on the school under four themes: risk assessment, working in partnership, staff training and IT policies.

16 Private Fostering

Schools and colleges quite often make arrangements for their children to have learning experiences where, for short periods, the children may be provided with care and

accommodation by a host family to whom they are not related. This might happen, for example, but not only, as part of a foreign exchange visit or sports tour. Such arrangements could amount to “private fostering” under the Children Act 1989 or the Safeguarding Vulnerable Groups Act 2006, or both.

16.1 LA notification when private fostering is discovered

Where schools and colleges have not been involved in making the arrangement but a member of staff or volunteer at a school or college becomes aware that a pupil may be in a private fostering arrangement, where a child under the age of 16 (or 18 if disabled) is provided with care and accommodation by someone to whom they are not related in that person’s home, they should raise this in the first instance with the DSL for child protection. The school or college should notify the local authority of the circumstances, and the local authority will check that the arrangement is suitable and safe for the child.

17 The Early Help Assessment (EHA) Levels 2 and 3

Early Help Northamptonshire has a single goal.

To enable children and families to access appropriate support as early as possible, so that they can maintain their quality of life, prevent any problems getting worse, and feel stronger, happier and more confident.

At Brigstock Latham’s Primary School an EHA will be initiated, with parental consent, where vulnerabilities are identified that cannot be met by the universal services. The school will work with the regional EHA Co-ordinator to identify a suitable Lead Professional who will complete the assessment and monitor ongoing support.

18 Child In Need (CIN)

Where it is deemed that further support is needed the DSL or DDSL will make an additional referral to the MASH Team or through the Complex Case Process (where an EHA has been actioned) to support the development of a Child In Need Plan. Brigstock Latham’s Primary School will always attend multi-agency meetings to ensure the best outcomes for all.

19 Whistleblowing

All staff and volunteers should feel able to raise concerns about poor or unsafe practice and potential failures in the school or college’s safeguarding regime and know that such concerns will be taken seriously by the senior leadership team.

Appropriate whistleblowing procedures, which are suitably reflected in staff training and staff behaviour policies, should be in place for such concerns to be raised with the school or college’s senior leadership team.

Where a staff member feels unable to raise an issue with their employer or feels that their genuine concerns are not being addressed, other whistleblowing channels may be open to them:

The NSPCC whistleblowing helpline is available for staff who do not feel able to raise concerns regarding child protection failures internally. Staff can call 0800 028 0285 – line is available from 8:00 AM to 8:00 PM, Monday to Friday and email: help@nspcc.org.uk

20 Looked After Children and the Virtual School

The most common reason for children becoming looked after is as a result of abuse and/or neglect. Governing bodies and proprietors should ensure that staff have the skills, knowledge and understanding necessary to keep looked after children safe.

In particular, we ensure that appropriate staff have the information they need in relation to a child's looked after legal status (whether they are looked after under voluntary arrangements with consent of parents or on an interim or full care order) and contact arrangements with birth parents or those with parental responsibility.

We should also have information about the child's care arrangements and the levels of authority delegated to the carer by the authority looking after him/her. The designated safeguarding lead will have details of the child's social worker and the name of the virtual school head in the authority that looks after the child.

20.1 The Designated Teacher

Governing bodies of maintained schools and proprietors of academy schools must appoint a designated teacher to promote the educational achievement of children who are looked after and ensure that this person has appropriate training.

20.2 Virtual School Heads

Virtual school heads receive pupil premium plus additional funding based on the latest published numbers of children looked after in the authority. In maintained schools and academies, the designated teacher should work with the virtual school head to discuss how that funding can be best used to support the progress of looked after children in the school and meet the needs identified in the child's personal education plan.

21 Children with special educational needs and disabilities

Children with special educational needs (SEN) and disabilities can face additional safeguarding challenges. Our policy ensures we recognise that additional barriers can exist when recognising abuse and neglect in this group of children all staff receive annual updates recognising the importance of safeguarding SEND children.

These barriers can include:

- assumptions that indicators of possible abuse such as behaviour, mood and injury relate to the child's disability without further exploration;
- the potential for children with SEN and disabilities being disproportionately impacted by behaviours such as bullying, without outwardly showing any signs; and
- communication barriers and difficulties in overcoming these barriers.

22 Online Safety – Filters and Monitoring

The governing body at Brigstock Latham's Primary School does all that they reasonably can to limit children's exposure to the above risks from the school's IT system. As part

of this process, we ensure that our school has appropriate filters and monitoring systems in place. Whilst considering our responsibility to safeguard and promote the welfare of children, and provide them with a safe environment in which to learn, the governing body should consider the age range of their pupils, the number of pupils, how often they access the IT system and the proportionality of costs vs risks. The appropriateness of any filters and monitoring systems are a matter for individual schools and colleges and will be informed in part by the risk assessment required by the Prevent Duty.

Useful Links

Local

Northamptonshire Safeguarding Children Board (NSCB):

Ground Floor

John Dryden House

8-10 The Lakes

Northampton

NN4 7YD

01604 364036

[http://www.northamptonshirescb.org.uk/worried-about-a-child-/](http://www.northamptonshirescb.org.uk/worried-about-a-child/)

“Making Children Safer” – A Pocket Guide download at:

<http://www.northamptonshire.gov.uk/mcs>

Thresholds and Pathways document:

<http://www.northamptonshire.gov.uk/en/councilservices/children/protecting-children/Pages/northamptonshire-thresholds-and-pathways.aspx>

Early Help – Request for Services

Early Help Co-ordinator

www.northamptonshire.gov.uk/earlyhelp

Multi-agency referral form download at:

http://northamptonshirescb.proceduresonline.com/client_supplied/LSCBNForm_May2014_2003version.doc

e-mail multi-agency form to:

MASH@northamptonshire.gcsx.gov.uk

Online Referral Form:

<http://www.northamptonshirescb.org.uk/more/borough-and-district-councils/how-to-make-an-online-referral/>

Directory of services for Early Help

<http://families.northamptonshire.gov.uk/directory-search>

Directory of services for children with disabilities

<http://www.northamptonshire.gov.uk/en/councilservices/children/disabled-children/pages/default.aspx>

Education Inclusion Partnership New from September 2015 More details to follow
Safeguarding Adults access advice:

Safeguarding Adults Team
Northamptonshire County Council
John Dryden House, 8-10 The Lakes
Northampton NN4 7YD

01604 362900 (Internal Ext 62900)

adultssafeguardingadmin@northamptonshire.gcsx.gov.uk (secure email)

e-referral form at:

<http://www.northamptonshire.gov.uk/en/councilservices/socialcare/adults/Pages/Safeguarding-Adults.aspx>

Complex Case Meetings and Locality Forums operate across Northamptonshire:

Complex Case Meetings

Meetings take place every two weeks in each district or borough – and more frequently if needed. The aim is to provide a responsive service to families and professionals. Schools can complete an online request form e-mailed to the appropriate address for your area, detailing the risks and issues and intended outcomes from a case discussion. Schools must have the family's consent for case discussion. If the concerns raised can be resolved without coming to a meeting, an Early Help Co Ordinator will contact the schools to offer advice and to agree actions. If the outcome of a complex case meeting is a referral to a particular service, this will be made by the chair of the meeting.

Locality Forums

The county's Early Help Forums have been replaced by ten Locality Forums that will build on existing relationships between professionals. This will help us all to move to an early intervention response that addresses the needs of the local area and build a shared understanding of the profile and emerging priorities of each local area.

Joining up resources and developing solutions to address local needs will be a key role of the new Locality Forums, which will be made up of key local stakeholders including schools, children's centres, NCC education, GPs and school nurses.

National

National Society for Prevention of Cruelty to Children (NSPCC):

<http://www.nspcc.org.uk/>

0808 800 5000

Childline:

<http://www.childline.org.uk/Pages/Home.aspx>

0800 1111

Child Exploitation and Online Protection (CEOP):

<http://ceop.police.uk/>

0870 000 3344

APPENDIX 1

DEFINITIONS OF ABUSE

(from 'Keeping Children Safe in Education' 2016)

What is Child Abuse?

"Abuse is a form of maltreatment of a child. Somebody may abuse or neglect a child by inflicting harm or by failing to act to prevent harm. Children may be abused in a family or in an institutional or community setting by those known to them or, more rarely, by others (e.g. via the internet). They may be abused by an adult or adults or by another child or children."

Physical Abuse

"A form of abuse which may involve hitting, shaking, throwing, poisoning, burning or scalding, drowning, suffocating or otherwise causing physical harm to a child. Physical harm may also be caused when a parent or carer fabricates the symptoms of, or deliberately induces, illness in a child."

Sexual Abuse

"Sexual abuse involves forcing or enticing a child or young person to take part in sexual activities, not necessarily involving a high level of violence, whether or not the child is aware of what is happening. The activities may involve physical contact, including assault by penetration (for example rape or oral sex) or non-penetrative acts such as masturbation, kissing, rubbing and touching outside of clothing. They may also include non-contact activities, such as involving children in looking at, or in the production of, sexual images, watching sexual activities, encouraging children to behave in sexually inappropriate ways, or grooming a child in preparation for abuse (including via the internet). Sexual abuse is not solely perpetrated by adult males. Women can also commit acts of sexual abuse, as can other children."

Neglect

"Neglect is the persistent failure to meet a child's basic physical and/or psychological needs, likely to result in the serious impairment of the child's health or development. Neglect may occur during pregnancy as a result of maternal substance abuse. Once a child is born, neglect may involve a parent or carer failing to: provide adequate food, clothing and shelter (including exclusion from home or abandonment); protect a child from physical and emotional harm or danger; ensure adequate supervision (including the use of inadequate care-givers); or ensure access to appropriate medical care or treatment. It may also include neglect of, or unresponsiveness to, a child's basic emotional needs"

Emotional Abuse

"Emotional abuse is the persistent emotional maltreatment of a child such as to cause severe and adverse effects on the child's emotional development. It may involve conveying to a child that they are worthless or unloved, inadequate, or valued only insofar as they meet the needs of another person. It may include not giving the child opportunities to express their views, deliberately silencing them or 'making fun' of what they say or how they communicate. It may

feature age or developmentally inappropriate expectations being imposed on children. These may include interactions that are beyond a child's developmental capability as well as overprotection and limitation of exploration and learning, or preventing the child participating in normal social interaction. It may involve seeing or hearing the ill-treatment of another. It may involve serious bullying (including cyberbullying), causing children frequently to feel frightened or in danger, or the exploitation or corruption of children.

Some level of emotional abuse is involved in all types of maltreatment of a child, although it may occur alone."

APPENDIX 2

PROCEDURE TO FOLLOW IN CASES OF POSSIBLE, ALLEGED OR SUSPECTED ABUSE, OR SERIOUS CAUSE FOR CONCERN ABOUT A CHILD

Contents

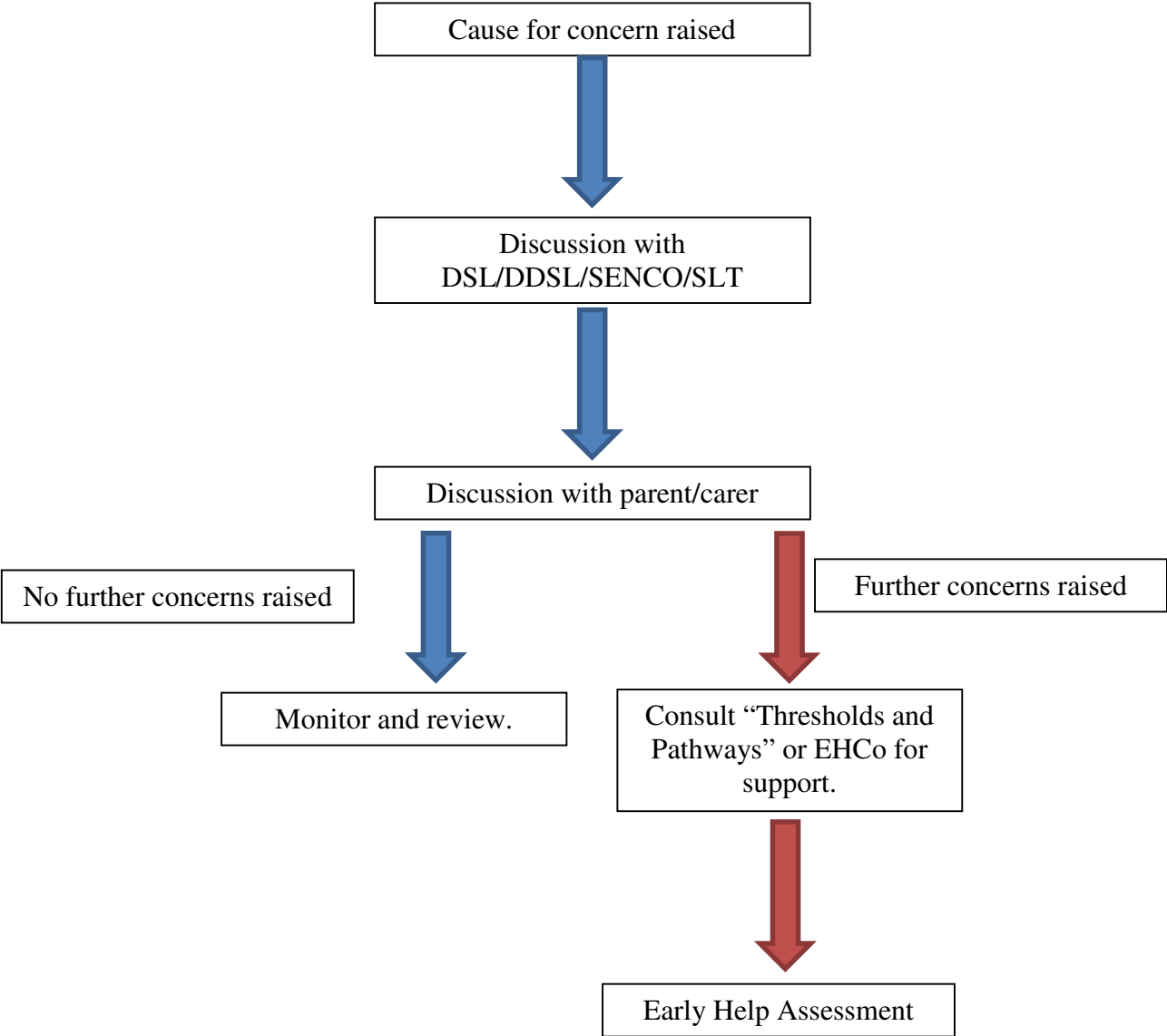
A	General	
B	Individual Staff/Volunteers/Other Adults - main procedural steps	
C	Designated Safeguarding Lead – main procedural steps	

A. General

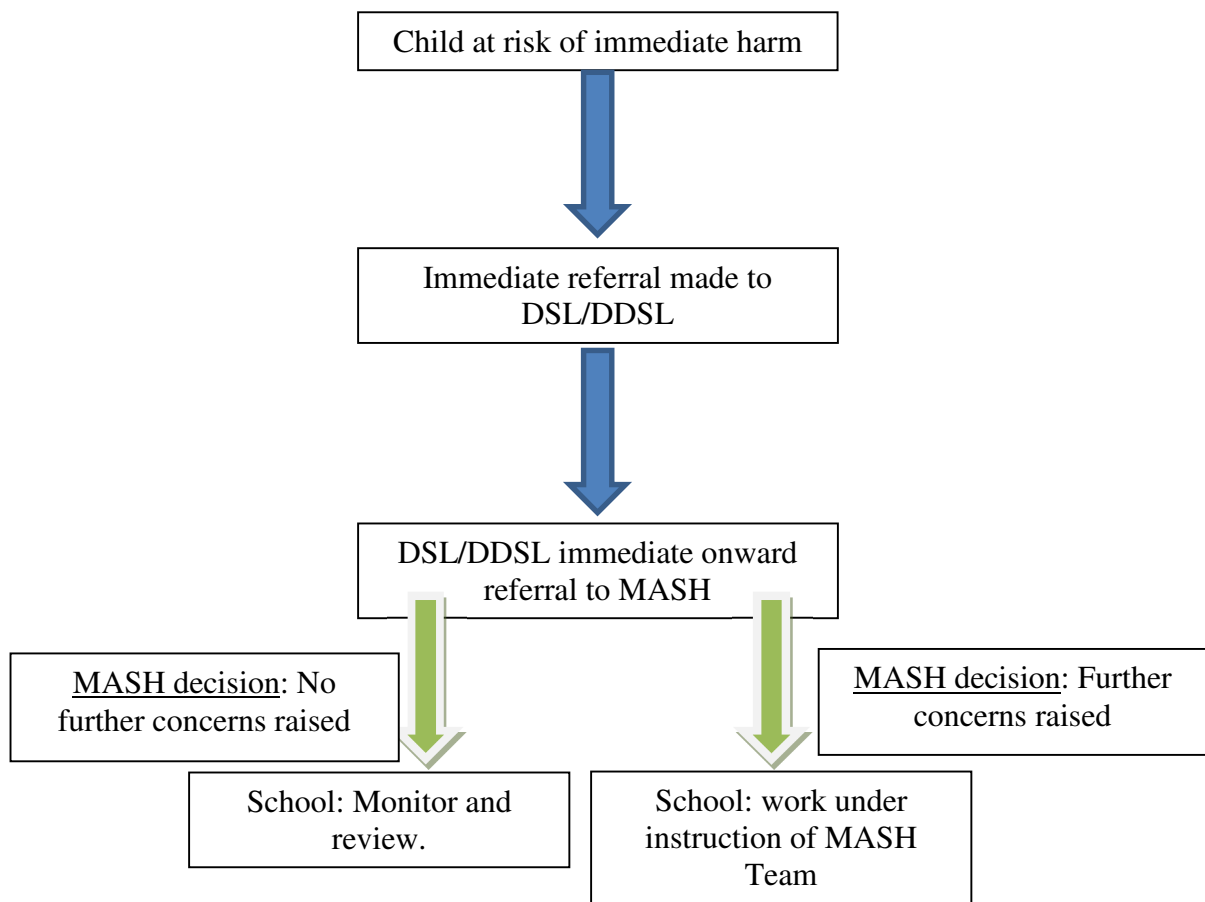
- 1) The Local Safeguarding Children Board for Northamptonshire Procedures contains the inter-agency processes, protocols and expectations for safeguarding children. (Available on NSCB website www.northamptonshirescb.org.uk). The Designated Safeguarding Lead is expected to be familiar with these, particularly the referral processes and with NCC “Thresholds and Pathways”.
- 2) It is important that all parties act swiftly and avoid delays.
- 3) Any person may seek advice and guidance from the Multi-Agency Safeguarding Hub particularly if there is doubt about how to proceed (see contacts at the start of this policy document). Any adult, whatever their role, can take action in his/her own right to ensure that an allegation or concern is investigated and can report to the investigating agencies.
- 4) Written records, dated and signed, must be made to what has been alleged, noticed and reported, and kept securely and confidentially.
- 5) In many cases of concern there will be an expectation that there have already been positive steps taken to work with parents and relevant parties to help alleviate the concerns and effect an improvement for the child. This is appropriate where it is thought a child may be in need in some way, and require assessment to see whether additional support and services are required. An example might be where it is suspected a child may be the subject of neglect. In most cases the parents’ knowledge and consent to the referral are expected, unless there is reason for this not being in the child’s interest. However, there will be circumstances when informing the parent/carer of a referral that might put the child at risk, and in individual cases advice from Children’s Social Care will need to be taken.

B. Referral Pathways at Brigstock Latham’s Primary School

Cause for Concern



Child at Risk of Significant Immediate Harm



C. Individual Staff/Volunteers/Other Adults – main procedural steps

- 1) When a child makes a disclosure, or when concerns are received from other sources, do not investigate, ask leading questions, examine children, or promise confidentiality. Children making disclosures should be reassured and if possible at this stage should be informed what action will be taken next.
- 2) As soon as possible write a dated, timed and signed note of what has been disclosed or noticed, said or done and report to the Designated Safeguarding Lead in the school.
- 3) If the concern involves the conduct of a member of staff or volunteer, a visitor, a governor, a trainee or another young person or child, the Headteacher must be informed. The Headteacher will contact the Designated Officer formerly LADO to seek advice.
- 4) If the allegation is about the Headteacher, the information should normally be passed to the Chair of Governors or the Designated Officer (formerly LADO). See contacts on Pages 3 and 4 of this policy.
- 5) If this has not already been done, inform the child (or other party who has raised the concern) what action you have taken.

D. Designated Safeguarding Lead – Main Procedural Steps

- 1) Begin a case file for pupils where there are concerns, with an overview chronology, which will hold a record of communications and actions. This must be stored securely (see Section on Records and Monitoring).
- 2) Where initial enquiries do not justify a referral to the investigating agencies inform the initiating adult and monitor the situation. If in doubt, seek advice from the Multi-Agency Safeguarding Hub: 0300 126 1000.
- 3) Share information confidentially with those who need to know.
- 4) Where there is a child protection concern requiring immediate, same day, intervention from Children's Social Care (Priority 1), the Multi-Agency Safeguarding Hub should be contacted immediately by phone. Written confirmation should follow within 24 hours on the NSCB Agency Referral Form. All other referrals should be made firstly through a telephone conversation with the Multi-Agency Safeguarding Hub and then by following up with the online form, where requested to do so. The Multi-Agency Safeguarding Hub is available for advice on the advice line number given in the contact details on page 3 of this document.
- 5) If it appears that urgent medical attention is required arrange for the child to be taken to hospital (normally this means calling an ambulance) accompanied by a member of staff who must inform medical staff that non-accidental injury is suspected. Parents must be informed that the child has been taken to hospital.
- 6) Exceptional circumstances: If it is feared that the child might be at immediate risk on leaving school, take advice from the Multi-Agency Safeguarding Hub (for instance about difficulties if the school day has ended, or on whether to contact the police). Remain with the child until the Social Worker or Police take responsibility. If in these circumstances a parent arrives to collect the child, the member of staff has no right to withhold the child, unless there are current legal restrictions in force (e.g. a restraining order). If there are clear signs of physical risk or threat, the Multi-Agency Safeguarding Hub should be updated and the Police should be contacted immediately.

APPENDIX 3

PROCESS FOR DEALING WITH ALLEGATIONS AGAINST STAFF (INCLUDING HEADTEACHERS) AND VOLUNTEERS (References to staff in this process include staff in schools, central References to staff includes staff in schools central services and volunteers).

These procedures should be followed in all cases in which there is an allegation or suspicion that a person working with children has:

- behaved in a way that has harmed a child, or may have harmed a child;
- possibly committed a criminal offence against or related to a child; or
- behaved towards a child or children in a way that indicates he or she would pose a risk of harm if they work regularly or closely with children.

Relevant documents:

- DfE *“Keeping Children Safe in Education: Statutory guidance for schools and colleges”* - 2016
- NSCB Procedures manual Section 5
 - 5.1, Selection and Supervision of Staff
 - 5.2 Managing Allegations Against Adults who work with Children

A. Individual Staff/Volunteers/Other Adults who receive the allegation:

- 1) Write a dated and timed note of what has been disclosed or noticed, said or done.
- 2) Report immediately to the DSL or DDSL .Keeping Children Safe in Education 2016
- 3) Pass on the written record.
- 4) If the allegation concerns the conduct of the Headteacher, report immediately to the Chair of Governors. Pass on the written record. (If there is difficulty reporting to the Chair of Governors, contact the Designated Officer formerly LADO as soon as possible or if unavailable contact the Multi-Agency Safeguarding Hub on the same day.)

B. Headteacher

- 1) If there is no written record, write a dated and timed note of what has been disclosed or noticed, said or done.
- 2) Before taking further action notify and seek advice from the Designated Officer Formerly LADO, or if unavailable the Multi-Agency Safeguarding Hub on the same day.
- 3) You may be asked to clarify details or the circumstances of the allegation, but this must not amount to an investigation.
- 4) Report to the Multi-Agency Safeguarding Hub if the Designated Officer Formerly LADO, so advises or if circumstances require a referral.

5) Ongoing involvement in cases:

- Liaison with the Designated Officer formerly LADO
- Co-operation with the investigating agency's enquiries as appropriate.
- Consideration of employment issues and possible disciplinary action where the investigating agencies take no further action.

C. Chair of Governors (only relevant in the case of an allegation against the Headteacher)

1) If there is no written record, write a dated and timed note of what has been disclosed or noticed, said or done.

2) Notify the Designated Officer formerly LADO, or if unavailable the Multi-Agency Safeguarding Hub on the same day.

3) You may be asked to clarify details or the circumstances of the allegation, but this must not amount to an investigation.

4) Report to the Multi-Agency Safeguarding Hub if the Designated Officer formerly LADO so advises or if circumstances require a referral.

5) Ongoing involvement in cases:

- Liaison with the Designated Officer formerly LADO
- Co-operation with the investigating agency's enquiries as appropriate.
- Consideration of employment issues and possible disciplinary action where the investigating agencies take no further action.

This Policy has been sent to Governors and staff on Monday 28th November 2016 for approval. Staff and governors have been encouraged to contribute towards the policy before being ratified by the Governing Body on Wednesday 7th December 2016.